

# MPC-M22V-36A Complete Ceiling Kit

## Designed for 13-46" Displays\*

### Best In Class Ceiling Mount Solution

- VESA compatible 75x75mm, 100x100mm, 200x100mm, 200x200mm
- 1" incremental drop length adjustment
- Fast and easy installation
- Up to 20° of continuous tilt and 360° rotation
- Through-column cable routing for an uncluttered look
- Decorative covers to hide ceiling bolts for a finished look
- Pre-sorted hardware pack for easy installation



SKU	Display Size*	Max VESA	Rotation	Max Load
MPC-M22V-36A	13-46"	200x200mm	360°	80lb

\* Display size is meant as a guide – Compatible display sizes can be larger or smaller depending on the VESA and weight of the display.

**Pre-Installed Securing Screws**  
Easy hook and secure installation and pre-assembled securing screw makes installation fast and easy.

**Mounting Surface**  
Standard 1.5" NPT threaded connection.

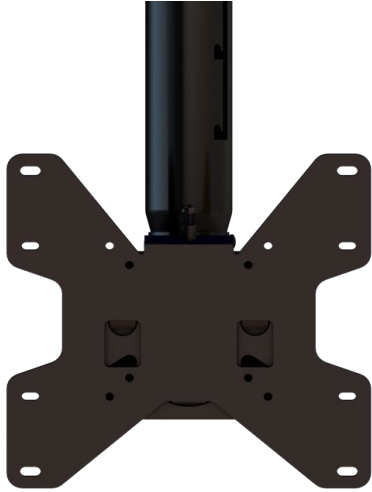
**Adjustable Drop Length**  
Adjust to the perfect length using 1" incremental adjustments.

**Tilt**  
0 to +20° tilt for optimal viewing angles.

**Mounting Hardware**  
Complete set of mounting hardware, labeled for ease of use and ready to go.

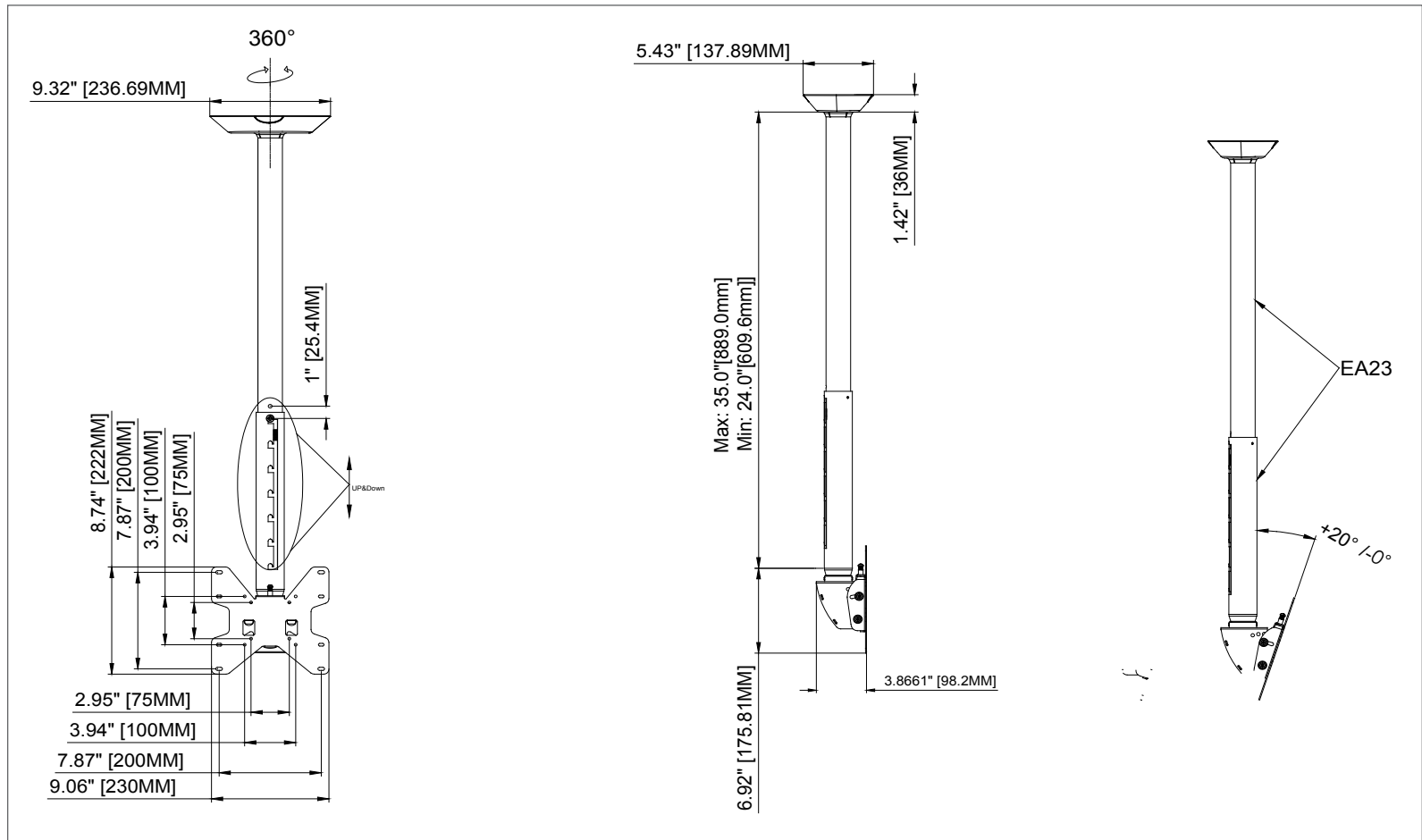
**VESA Design**  
Compatible with 75X75mm, 100X100mm, 200X100mm and 200X200mm sizes.

# MPC-M22V-36A Complete Ceiling Kit For 13-46" Displays\*



Attribute	Value
Recommended display size*	13" - 46"
Weight capacity	80lb (36kg)
Max mounting pattern	200x200mm
Min mounting pattern	75mmx75mm
Rotation	360°
Tilt	+20°/-0°
Drop length	24" to 36"
Height adjustments	1" increments
Construction	High-grade cold rolled steel
Color	Black
Part number	MPC-M22V-36A
Warranty	5 year limited
Product Weight	12.6lb (5.7kg)

Complete ceiling installation kit with 2' to 3' drop adjustment for 13" to 46" displays\*. Includes VESA display adapter, 2'-3' adjustable extension columns for mounting on a single joist. Continuous tilt of 20° forward, 360° rotation. Incremental drop lengths provide perfect display positioning.



## Pipes and Connectors

Featuring standard 1.5" thread interface

800-398-5652



MPE-SERIES PIPE	
Model	Drop Length
MPE-06 / W	6"
MPE-1 / W	12"
MPE-018	18"
MPE-2	2'
MPE-3	3'
MPE-4	4'
MPE-5	5'
MPE-6	6'
MPE-7	7'
MPE-8	8'
MPE-9	9'
MPE-10	10'

MPEA-SERIES PIPE	
Model	Drop Length
MPEA-0611 / W	6" - 11"
MPEA-01218	12" - 18"
MPEA-01824	18" - 24"
MPEA-23	2' - 3'
MPEA-24	2' - 4'
MPEA-35	3' - 5'
MPEA-46	4' - 6'
MPEA-68	6' - 8'
MPEA-810	8' - 10'
MPEA-1012	10' - 12'

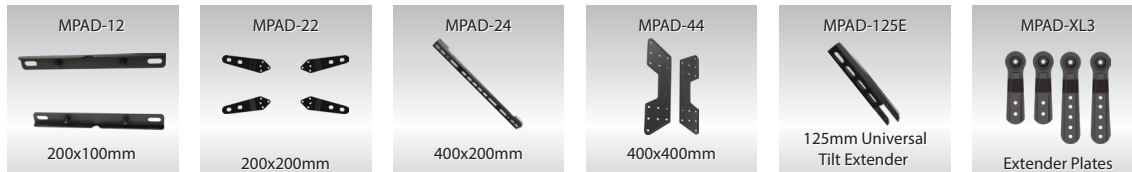
## Ceiling Adapters

Featuring standard 1.5" thread interface



\*Available with Unistrut hardware : MPCA-UNIS (MPCA-1) , MPCA-UNID225 (MPCA-4), MPCA-UNID625 (MPCA-8)

## VESA Adapter Extenders



## Other Accessories

