

MPAO-X75ULL Outdoor Articulating Mount

Universal Mount For 37-75" Displays

Best In Class Outdoor Articulating Mount Solution

- Dacromet® coating provides year round protection against corrosion, rust, and all types of weather
- Universal design fits a wide variety of displays
- Lateral shift for perfect display placement
- Compatible with displays up to 130 lb and with VESA pattern up to 723 x 522mm
- Up to 15.5" of extension when fully extended
- Integrated cable management for a clean look



Model	Display Size*	Max VESA	Total Load
MPAO-X75ULL	37" - 75"	723x522mm	130lb

* Display size is meant as a guide – Compatible display sizes can be larger or smaller depending on the VESA and weight of the display.

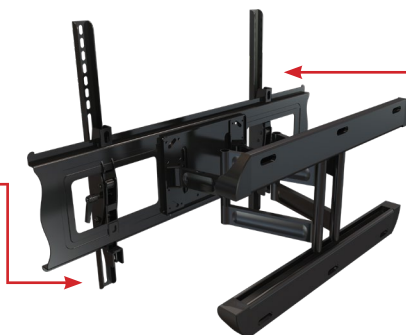
DACROMET® PROTECTION

Fully shielded from Outdoor Elements

DUAL KEYED LOCKS

Locking Brackets for High Security

Both hanger brackets come equipped with steel keyed locks to prevent theft and unwanted tampering



LATERAL SHIFT AND LEVELING

Post-Installation Leveling Mechanisms

Post installation display adjustment allows for lateral (up/down) adjustment and individual side-to-side leveling for perfect placement

FULLY ADJUSTABLE ANGLES

Up to 41° Pivot and 15° Tilt

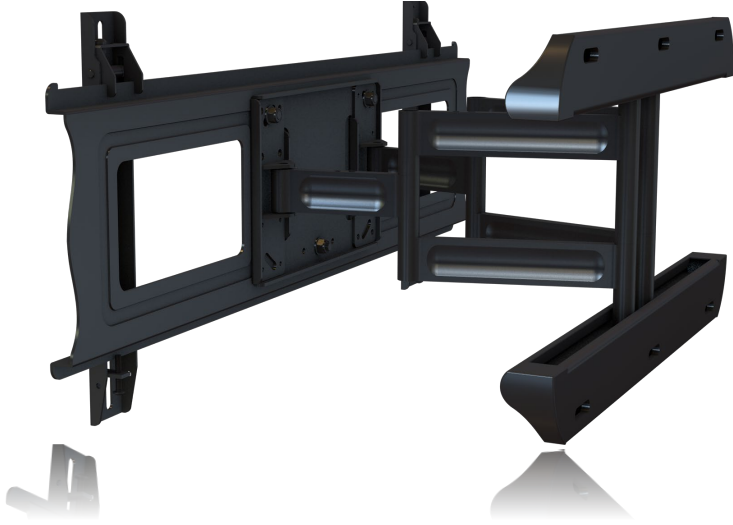
With more than 15" of full extension, the L also has up to 41° pivot and +15°/-5° of tilt, allowing for a wide variety of viewing angles



MPAO-X75ULL Outdoor Articulating Mount

Universal mount for 30-75" displays*

Mustang AV
www.mustangav.com



Attribute	Value
Recommended display size *	30" - 75"
Weight capacity	130lb (59kg)
Max mounting pattern	723x522mm
Min mounting pattern	75x75mm
Pivot	41°
Roll (side to side)	3°
Tilt	+15°/-15°
Depth from wall	3.8" (96.2mm)
Max extension	15.5" (394mm)
Construction	Aluminum/high-grade cold rolled steel
Product weight	21.8lb (9.9kg)
Product finish	Scratch resistant epoxy powder coat
Color	Black
Model number	MPAO-X75ULL
Warranty	5 year limited

Ideal for outdoor applications, the MPAO-X75ULL is coated with Dacromet® finish to protect from the elements, while offering high functionality, aesthetics, and value. Dual locks ensure high security with the push of a key. Fits a huge variety of displays from 30-75" with through-cord cable management, post installation leveling, and tilting capability for easy display placement and adjustment.

