

MPAD-CPU Universal CPU/Control Box Bracket

Compatible with Crimson Tilt, Video Wall and Menu Board Mounts

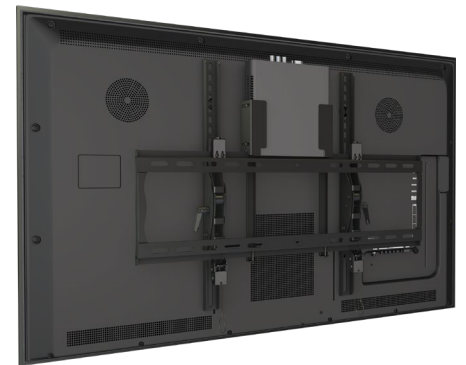
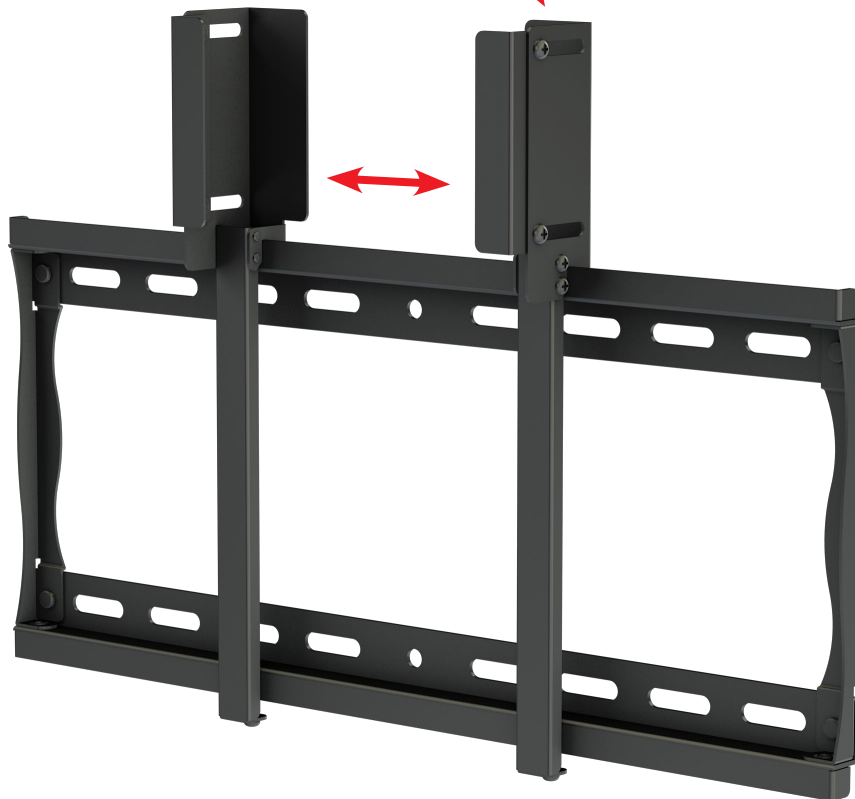
- Fully adjustable to hold a wide variety of components
- Low profile, great for any digital signage application
- Attach to any Crimson Universal wall plate
- Easily hides behind mount and display



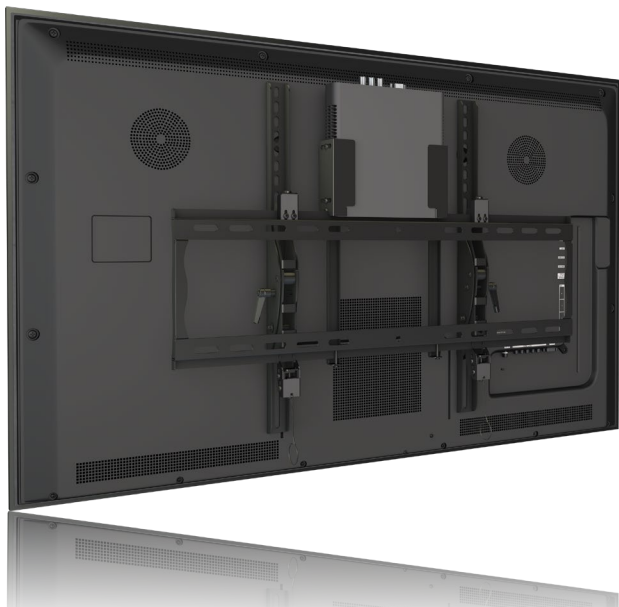
ADJUSTABLE

Maximum 2" Depth

Clamps around components up to 2" in depth and slides along the wall plate into the desired position.



MPAD-CPU Universal CPU/Control Box Bracket



Attribute	Value
Monitor size	32" - 50"
Compatibility	Crimson tilt, video wall and menu board mounts
Weight capacity	20 lb
Post-installation leveling	All models
Tilt	N/A
Adjustment	Adjusts for length and depth to accomodate components up to 2" deep
Packaging Dimensions	15" x 3" x 3"
Shipping weight	1.2 lb
Construction	High-grade cold rolled steel
Product finish	Scratch resistant epoxy powder coat
Color	Black
Model number	MPAD-CPU
Warranty	5 year limited

Conveniently secure components behind the display by attaching directly to the TV mount wall plate for a clean professional installation. MPAD-CPU can handle components up to 2" in depth.

