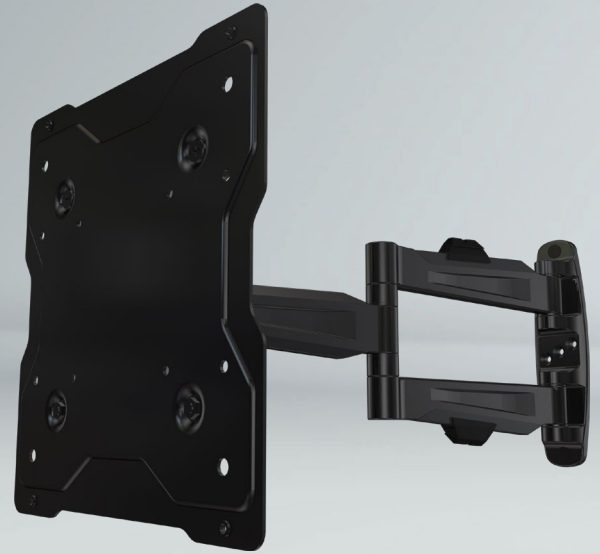


# MPA-M22V Full Motion Articulating Wall Mount

Designed for 13-49" Displays\*

## Best In Class Articulating Wall Mount Solution

- VESA compatible 100x100mm, 200x100mm, 200x200mm
- Optional AD400 extends compatibility up to 400x400mm
- Smooth variable tilt from 15° forward to 5° back
- Integrated cable management for clean look
- Multiple attachment points for different mounting surfaces offers additional safety



Model	Display Size*	Max VESA	Total Load
MPA-M22V	13" - 49"	200 x200mm	80lb

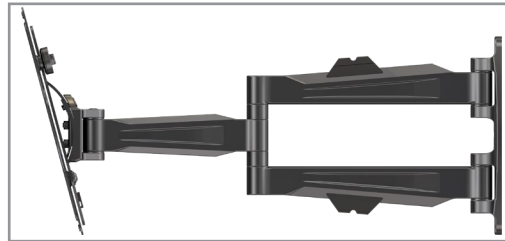
\* Display size is meant as a guide – Compatible display sizes can be larger or smaller depending on the VESA and weight of the display.

### Pre-Installed Securing Screw

Display simply hooks in place. Pre-assembled securing screw makes installation fast and easy.

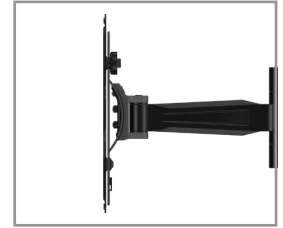
### VESA Compatible

Fits VESA hole patterns 75x75mm, 100x100mm, 200x100 and 200x200mm.



### Full Range of Motion

3 pivot joints for variable viewing angles.



### Tilt

Pre-tensioned tilt mechanism allows 15° forward and 5° backward tilt for optimal viewing angles.

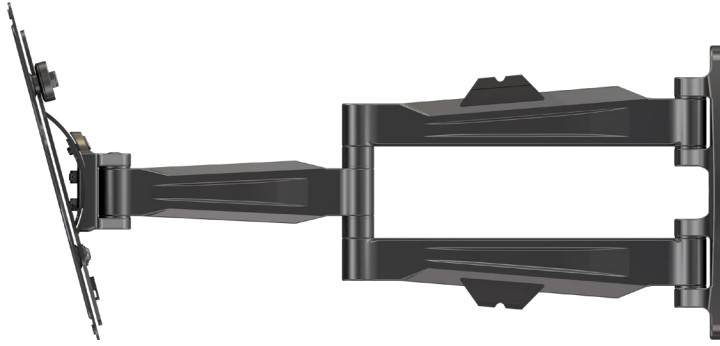


### Cord Management

Integrated cord management for clutter-free installation.

# MPA-M22V Full Motion Articulating Wall Mount

For 13-49" displays\*



Attribute	Value
Recommended display size *	13" - 49"
Weight capacity	80lb (36kg)
Max mounting pattern	200x200mm
Min mounting pattern	100x100mm
Pivot	180° (max pivot can be restricted by width of display)
Tilt	+15°/-5°
Depth from wall	2.5" (63.5mm)
Max extension	21" (533mm)
Construction	Aluminum/high-grade cold rolled steel
Product weight	9.0lb (4.1kg)
Product finish	Scratch resistant epoxy powder coat
Color	Black
Model number	MPA-M22V
Warranty	5 year limited

Articulating mount for 13" to 49" displays\*. Multiple joint arm holds display 2.5" from wall when retracted and 21" when fully extended. Smooth tilt adjustments of +15° (forward) and -5° (back) with a locking knob and 3° side-to-side roll facilitates a variety of viewing angles and perfect positioning. Three attachment points for wood studs and four attachment points for concrete walls provide additional security. Integrated cable management for clean look.

