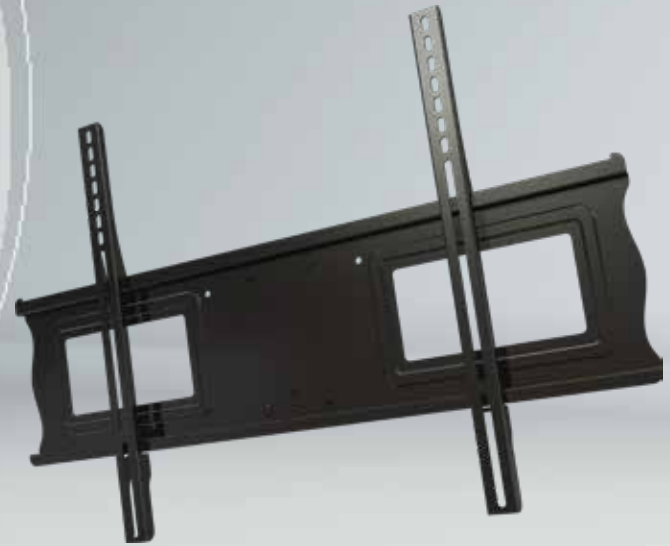


MPC-L75U Ceiling Mount With Post-Install leveling

For 37-75"+ displays

Best In Class Ceiling Mount Solution

- Universal design
- VESA compatible
- Fast and easy installation
- Up to 20° of continuous tilt and 360° rotation
- Pin-locking incremental tilt adjustment
- Post installation screen leveling without use of tools
- Mounts to any 1.5" NPT threaded pipe
- Pre-sorted hardware pack for easy installation



SKU	Display Size	Max VESA	Rotation	Max Load
MPC-L75U	37" -75"+	600x400mm	360°	200lb

Universal Design
Fits any hole pattern up to 723x501mm. Max VESA hole pattern 700x500mm.

Mounting Surface
Standard 1.5" NPT threaded connection.

Tilt
0 to +20° tilt for optimal viewing angles.

Mounting Hardware
Complete set of mounting hardware, labeled for ease of use and ready to go.

Pre-Installed Securing Screws
Easy hook and secure installation and pre-assembled securing screw makes installation fast and easy.

Lateral Adjustment
Lateral adjustment functionality for positioning display in the right spot on the wall. Extended verticals allows for a wider screen coverage within the size range.

MPC-L75U Ceiling Mount With Post-Install leveling

For 37-75"+ displays



Attribute	Value
Display size	37" - 75"+
Weight capacity	200lb (91kg)
Max mounting pattern	600x400mm
Rotation	360°
Tilt	+20°/-0°
Role side to side	6° tool less screen leveling
Mounting interface	1.5" NTP thread compatible
Construction	High-grade cold rolled steel
Color	Black
Product Weight	14.1lb (6.4kg)
Part number	MPC-L75U
Warranty	Limited lifetime

Ceiling mount box and universal display adapter assembly for 37" to 75"+ displays. Attaches to standard 1.5" threaded extension columns. Continuous tilt of 20° forward with 360° rotation. Pin-locking pre-set tilt positions at 5°, 10°, 15° and 20°. Makes a secure display installation quick and easy, simply hang the display and turn the pre-assembled securing screw to lock the universal adapter in place. Compatible with all 1.5" NPT threaded pipe.

