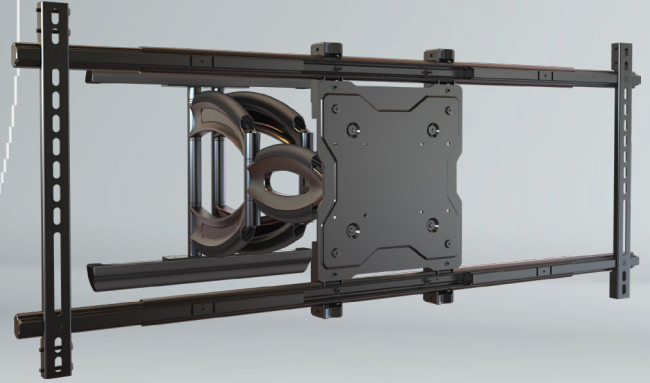


MPA-XHD86U Full Motion Articulating Wall Mount

Universal Mount For 60-98" Displays

Best In Class Articulating Wall Mount Solution

- Universal design
- VESA compatible
- Smooth action dual scissor arm provides balance
- Post-installation lateral and vertical adjustments facilitate precision TV positioning
- Post-installation leveling compensates for uneven ceilings
- Cord management feature ensures a clean-looking installation
- Pre-sorted hardware pack for easy installation to wood studs or concrete surfaces included



Model	Display Size	Max VESA	Total Load
MPA-XHD86U	60" - 98"	850x672mm	300lb

Universal Design
Fits any hole pattern up to 800x600. Max VESA hole pattern 850x672mm.

Full Range of Motion
3 pivot joints for variable viewing angles.

Tilt
15° forward and 5° back tilt for optimal viewing angles.

Lateral Adjustment
Lateral adjustment functionality for positioning TV in the right spot on the wall.

Mounting Hardware
Complete set of screen mounting hardware, labeled for ease of use and ready to go.

MPA-XHD86U Full Motion Articulating Wall Mount

For large format displays

Mustang AV
www.mustangav.com



Attribute	Value
Display size	60" - 98"
Weight capacity	300lb (136kg)
Max mounting pattern	850x672mm
Pivot	50°
Roll (side to side)	6°
Tilt	+15°/-15°
Depth from wall	3.4" (86mm)
Max extension	27" (686mm)
Construction	Aluminum/high-grade cold rolled steel
Product weight	33.7lb (15.3kg)
Product finish	Scratch resistant epoxy powder coat
Color	Black
Model number	MPA-XHD86U
Warranty	Limited lifetime

NEW Robust Series Articulating mount for large-format 60 to 98" TVs with heavy-duty smooth action dual scissor arm and post-installation leveling. Articulating mount with a heavy-duty dual arm scissor action that provides better balance and smooth movement for large-format 60 to 98" TVs. Post-installation leveling compensates for uneven ceilings as well as the natural sag experienced with 100lb+ TVs. Post-installation lateral and vertical adjustments facilitate precision positioning and provide needed installation flexibility for recessed applications.

