

MPAD-CPU40 Universal CPU/Control Box Bracket

Compatible with Mustang Tilt, Video Wall and Menu Board Mounts

- Fully adjustable to hold a wide variety of components
- Low profile, great for any digital signage application
- Attach to any Mustang Universal wall plate
- Easily hides behind mount and display



ADJUSTABLE

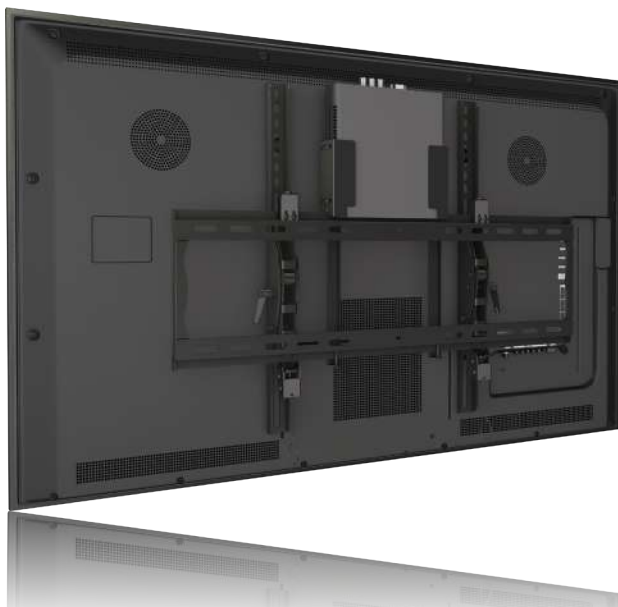
Maximum 2" Depth

Clamps around components up to 2" in depth and slides along the wall plate into the desired position.



MPAD-CPU40 Universal CPU/Control Box Bracket

Mustang AV
www.mustangav.com



| Attribute | Value |
|----------------------------|--|
| Monitor size | 32" - 50" |
| Compatibility | Mustang tilt, video wall and menu board mounts |
| Weight capacity | 20 lb |
| Post-installation leveling | All models |
| Tilt | N/A |
| Adjustment | Adjusts for length and depth to accommodate components up to 2" deep |
| Packaging Dimensions | 15" x 3" x 3" |
| Shipping weight | 1.2 lb |
| Construction | High-grade cold rolled steel |
| Product finish | Scratch resistant epoxy powder coat |
| Color | Black |
| Model number | MPAD-CPU40 |
| Warranty | Lifetime |

Conveniently secure components behind the display by attaching directly to the TV mount wall plate for a clean professional installation. MPAD-CPU40 can handle components up to 2" in depth.

