

Professional Solutions - Unrivalled Value

Universal Tilting mount for 32" to 75" flat panel screens. Smooth tilt adjustments of 15° forward and 5° back with a locking knob for a variety of viewing angles. Makes a secure installation quick and easy, simply hang the screen and turn the pre-assembled securing screws to lock in place. Open wall plate design provides easy access to wiring.

32"-75" / 81.3cm-190cm

200 LB / 90 KG

Functional Specifications

Depth from wall: 2.2" (58mm)

Tilt: +15°/-5°

Mounting Surfaces: Wood studs, concrete & cinder block (with included hardware). Metal Studs (requires accessories).

Max Mounting Pattern:

660mm (26") width

501mm (19.8") height

Load Capacity: 200 LB / 90 KG

Warranty: Limited 10 Years

■ **Universal Design / Vesa Compatible**
Works with any hole pattern up to 660x501mm (26"x19.8").

■ **Slim Design**
Holds flat panel screen only 2.2" (58mm) from wall.

■ **Screen Size**
Fits most 32" to 75" flat panel screens weighing up to 200lb (90kg).

■ **Tilt**
Pre-tensioned tilt mechanism allows for smooth tilt adjustment of 15° forward and 5° back.

■ **Post-Installation Leveling**
Allows for displays to be leveled after being mounted.

■ **Lateral Adjustment**
Lateral shift for perfect screen placement.

■ **Included Hardware**
Pre-sorted hardware pack for easy component selection and installation (hardware for installation to wood studs or concrete surfaces included).

Post-Installation Leveling

10mm up-down adjustment after display has been mounted

Universal Design

Fits any hole pattern up to 660x501mm (26"x19.8"). Max VESA hole pattern 600x500mm.

Lateral Adjustment

Lateral adjustment functionality for positioning TV in the right spot on the wall.



Tilt for perfect viewing

Pre-tensioned tilt mechanism allows for smooth tilt adjustment of 15° forward and 5° back.



Pre-Installed Securing Screws

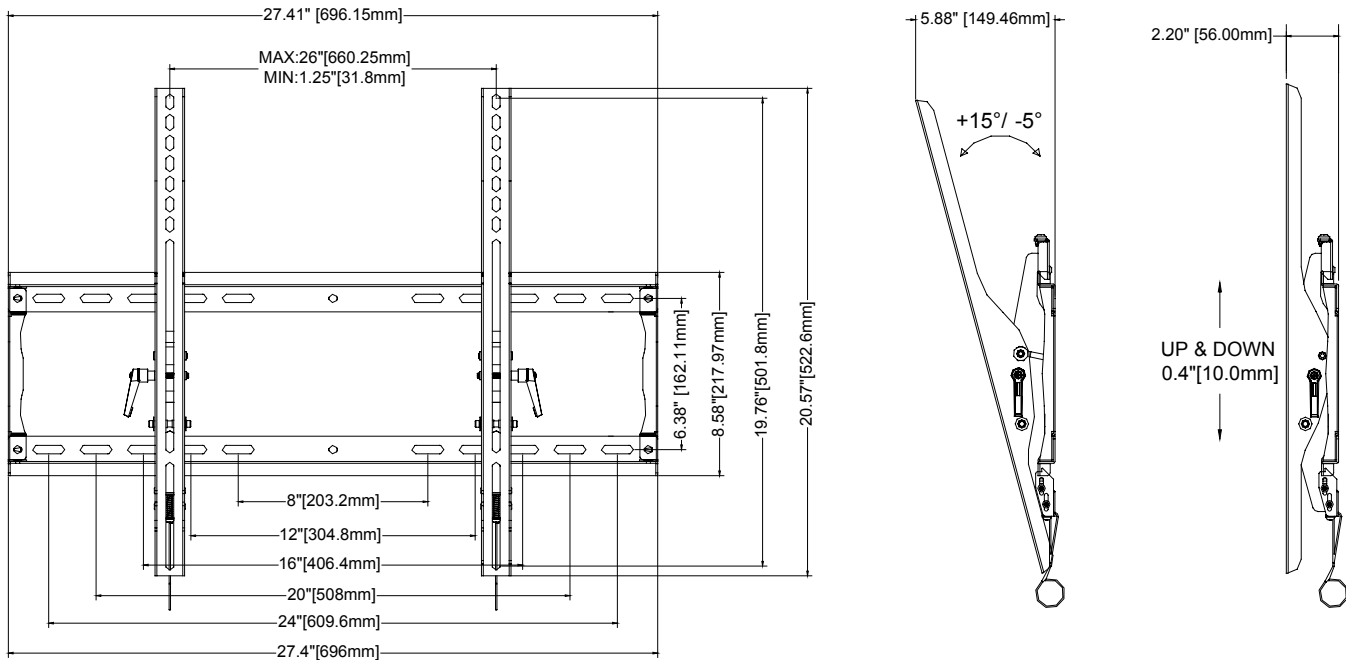
Easy hook and secure installation and pre-assembled securing screw makes installation fast and easy.



Mounting Hardware

Complete set of screen mounting hardware, labeled for ease of use and ready to go.

Maximum load rating: 200 lbs



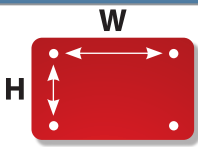
Product Specifications

PRODUCT WEIGHT	LOAD CAPACITY	COLORS	FINISH
6.8lb (3.1kg)	200lb (90kg)	Black Silver	Scratch resistant powder coating

Package Specifications

PACKAGE SIZE (WxHxD)	SHIP WEIGHT	UPC CODE	PACKAGE CONTENTS
28.5" x 10.2" x 3.2" (724 x 260 x 82 mm)	9.5lb (4.3kg)	MPT-L65UA	Mount, wall and screen mounting hardware, product manual.

Mounting Interface



Universal

	Min	Max
W	31mm	660mm
H	31mm	501mm

VESA

	75mm	100mm	200mm	200mm	300mm	300mm	400mm	400mm	400mm	600mm	600mm
W	X	X	X	X	X	X	X	X	X	X	X
H	75mm	100mm	100mm	200mm	200mm	300mm	200mm	300mm	400mm	200mm	400mm

Accessories

Toggle bolts (for metal stud installation)



MPHT-2 - 2 Pack
MPHT-4 - 4 Pack
MPHT-6 - 6 Pack

Use when installing into metal stud.

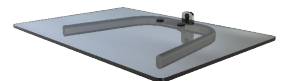
On-wall Cable Management



MPWA-1 - 1 Shelf
MPWA-2 - 2 Shelves
MPWA-3 - 3 Shelves

Component shelf and on-wall cable routing system. Hides cables inside internal channels for a clean look.

Shelving



MPWF-1 - 1 Shelf

Single-stud mountable component shelf.

Visit mustangav.com to see the full line of vidamounts LCD/plasma, projector and TV/monitor mounts.