

MPF-XHD136U Heavy Duty Flat Wall Mount

For Large Format & Interactive Displays 100"+

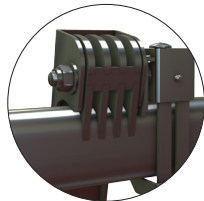
Sturdiest, Most Durable Mount in the Industry

- 400lb load rating
- Integrated kickstand and pivot functionality places display in Service Mode for easy wiring and service
- Post-installation leveling
- Lateral shift for perfect display positioning
- Security lock mechanism prevents display from being removed
- Supports Microsoft Surface Hub



Model	TV Size	VESA	Depth	Max Load
MPF-XHD136U	70"-100"+	1300x600mm	1.97"	400 lb

Pivot Point



SERVICE MODE

Kickstand & Mounting Pivot

Gives installer 6-7" of clearance for wiring and service. Pull and hold release cords to automatically deploy kickstand. When wiring is completed, simply pull the bottom of display and kickstand automatically retracts.

Kickstand



POST INSTALLATION LEVELING

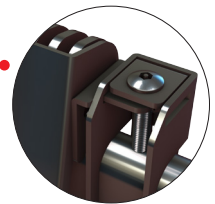
Easier to Reach

Fine tune leveling adjustment screws are placed at the very bottom for easy reach when micro adjustments are required.

SECURITY

Lock Down Security

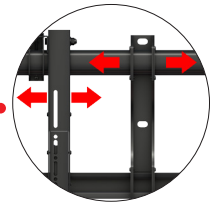
Prevents display from being removed.



LATERAL SHIFT

Two Independent Shift Points

Both the mount frame and TV are able to slide left to right independently, for perfect placement. Once the wall mounting bolts are tightened the frame position is automatically locked in position.



CLICK IN PLACE

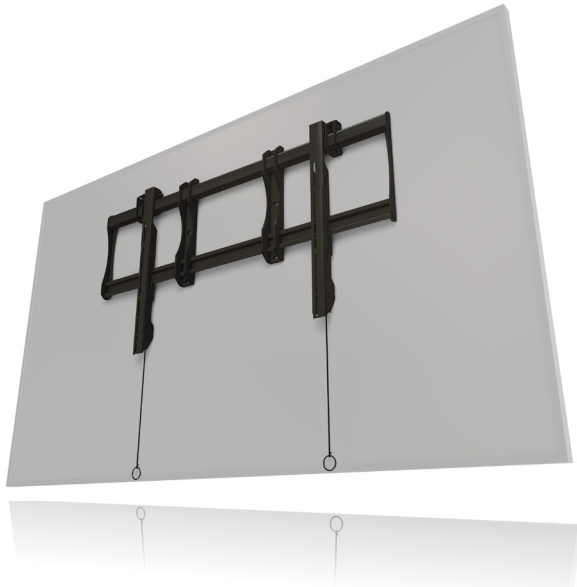
For Easy Placement

Simply lower the bottom of display into place until it clicks to finish the installation.



MPF-XHD136U Heavy Duty Flat Wall Mount

For Large Format & Interactive Displays 100"+



MPF-XHD136U is the most robust universal mounting solution in its class with a hefty 400lb load rating, making it the ideal solution for large format and interactive displays up to 100" and larger. Designed with the installer in mind, the MPF-XHD136U shifts the mounting center down, which fully utilizes the integrated pivot and kickstand features and simplifies wiring during installation and service.

Attribute	Value
Monitor size	70"-100"+
Orientation	Landscape
Weight capacity	400 lb
Max mounting pattern	1300x600mm
VESA mounting patterns	400x400mm through 1300x600mm
Post-installation leveling	Yes
Tilt	N/A
Depth from wall	1.97"
Security	Dual steel lock brackets with security screws
Packaging Dimensions	64.96" x 20.87" 5.31"
Shipping weight	43.84 lb
Construction	High-grade cold rolled steel and aluminum
Product finish	Scratch resistant epoxy powder coat
Color	Black
Model number	MPF-XHD136U
Warranty	Lifetime

